

## ***CZ336:ip1Tg/+(AB)***

### **Nature of the transgene**

The *ip1Tg* allele was generated by random integration of pT2(ifnphi1:mCherry) construct.

### **Genotyping assay**

1. Genotyping of the *ip1Tg* allele is based on the fluorescent microscope. As identified by fluorescent microscope, the mCherry fluorescence signal is detectable in intestine.

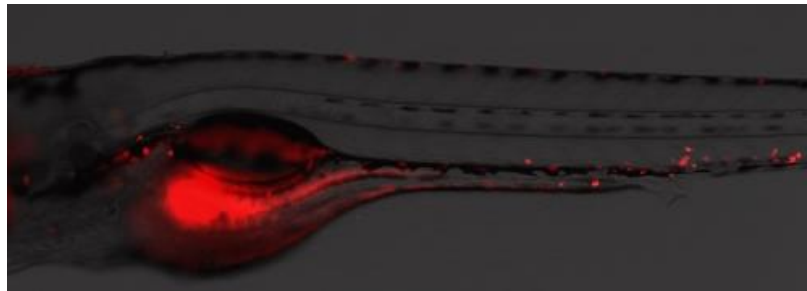


Figure. mCherry expression in intestine at 7 dpf in *ip1Tg* line.