

CZ83: Tg(Pu.1-gal4-*vp16-*usa-gfp**

Nature of the transgene

The *Tg(Pu.1-gal4-*vp16-*usa-gfp***) was generated by random integration of pT2(*Pu.1-gal4-*vp16-*usa-gfp***) construct.

Genotyping assay

Genotyping of the *Tg(Pu.1-gal4-*vp16-*usa-gfp***) allele is based on the fluorescent microscope. As identified by fluorescent microscope, the GFP fluorescence signal is detectable in ventral mesoderm.

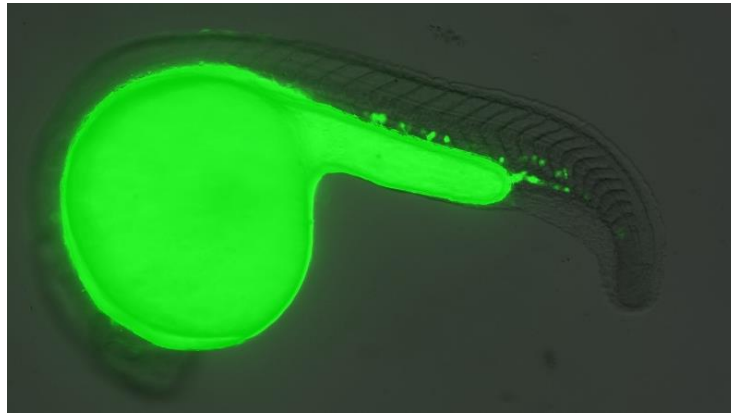


Figure. GFP expression in ventral mesoderm at 2dpf in *Tg(Pu.1-gal4-*vp16-*usa-gfp***) line.