

CZ80:ihb28Tg/+(AB)

Nature of the transgene

The *ihb28Tg* allele was generated by random integration of pT2(BRE:GFP) construct.

Genotyping assay

1. Genotyping of the *ihb28Tg* allele is based on the fluorescent microscope. As identified by fluorescent microscope, the GFP fluorescence signal is detectable in heart.

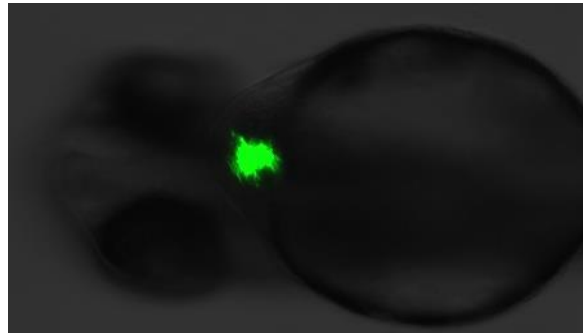


Figure. GFP expression in heart at 2dpf in *ihb28Tg* line.