

***S870Tg/+* (AB) (CZRC catalog ID: CZ41)**

**Nature of the mutation**

*S870Tg* is generated by random integration of a GFP-containing construct, predominantly expresses GFP in the forerunner cell group, Kupffer vesicle cell and endodermal cell(Lai, Yao et al. 2012).

**Genotyping assay**

1. Genotyping of the *s870Tg* allele is based on the fluorescent microscope. As identified by fluorescent microscope, the GFP fluorescence signal is detectable at 30 hpf.

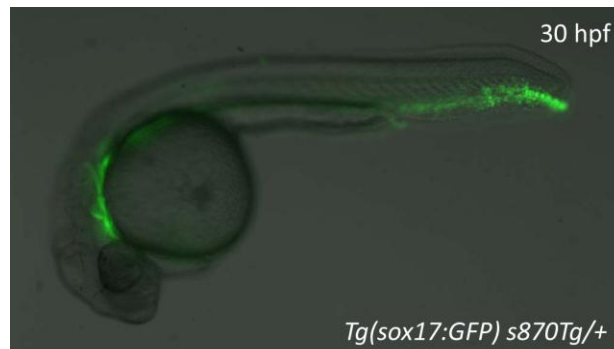


Figure. The *s870Tg* line expresses GFP in the forerunner cell group, Kupffer vesicle cell and endodermal cell at 30 hpf.

The figure shows the lateral view of *s870Tg* embryos at 30 hpf.

**Reference**

Lai, S. L., W. L. Yao, et al. (2012). "Autotaxin/Lpar3 signaling regulates Kupffer's vesicle formation and left-right asymmetry in zebrafish." Development **139**(23): 4439-4448.