

## ***ml1Tg/+* (AB) (CZRC Catalog ID: CZ 259)**

### **Nature of the mutation**

The *gd4Tg* allele is a transgenic zebrafish line *Tg(-1.8gsc:GFP)* with green fluorescent protein expression in the embryonic shield at 6 hpf.

### **Genotyping assay**

Genotyping of the *ml1Tg* allele is based on the fluorescent microscopy. At 6 hpf, the *Tg(-1.8gsc:GFP)* is expressed green fluorescent protein in the embryonic shield.

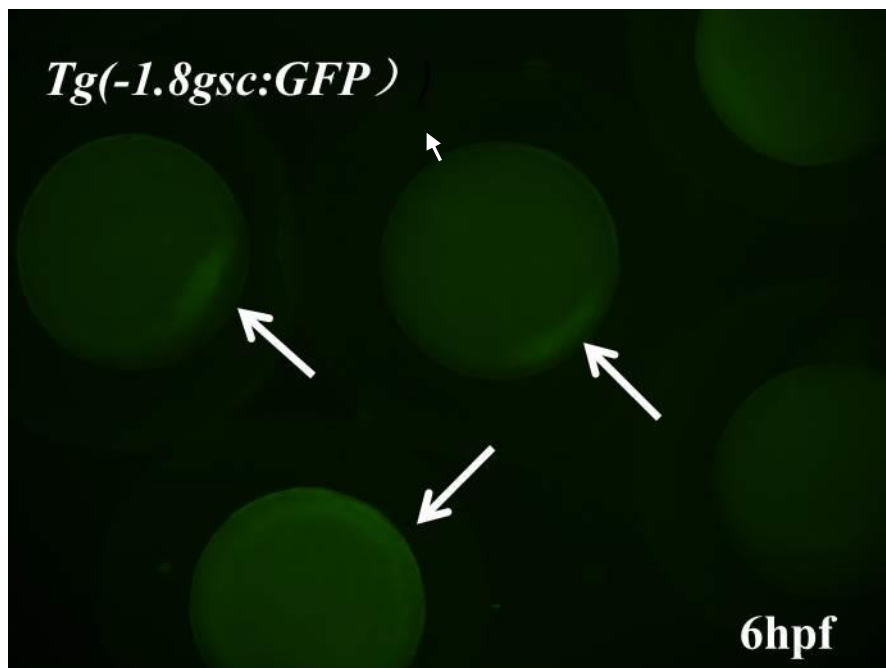


Figure. The green fluorescent protein expression in embryonic shield in *Tg(-1.8gsc:GFP)* line. The arrow shows the expressed GFP in embryonic shield.

### **Reference**

- Dumortier, J.G., Martin, S., Meyer, D., Rosa, F.M., and David, N.B. (2012) Collective mesendoderm migration relies on an intrinsic directionality signal transmitted through cell contacts. *Proc. Natl. Acad. Sci. USA* 109(42):16945-16950
- Doitsidou, M., Reichman-Fried, M., Stebler, J., Köprunner, M., Dörries, J., Meyer, D., Esguerra, C.V., Leung, T., and Raz, E. (2002) Guidance of primordial germ cell migration by the chemokine SDF-1. *Cell* 111(5):647-659
- Deflorian, G., Tiso, N., Ferretti, E., Meyer, D., Blasi, F., Bortolussi, M., and Argenton, F. (2004) *Prep1.1* has essential genetic functions in hindbrain development and cranial neural crest cell differentiation. *Development* 131(3):613-627