

***i187Tg/+* (AB) (CZRC Catalog ID: CZ 260)**

Nature of the mutation

The *i187Tg* allele is a transgenic zebrafish line *Tg2(smyhc1:EGFP)* with green fluorescent protein expression in skeletal muscle fibre.

Genotyping assay

Genotyping of the *i187Tg* allele is based on the fluorescent microscopy. At 72 hpf, the *smyhc1:gfp* reporter gene is expressed in a subset of the slow fibres.

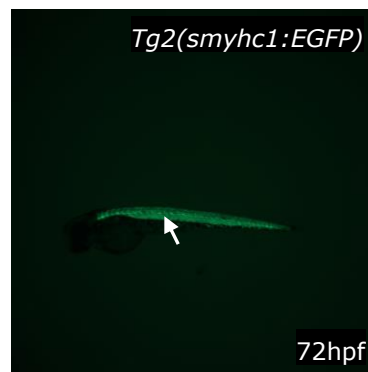


Figure. The green fluorescent protein expression in skeletal muscle fibre, in *Tg2(smyhc1:EGFP)* line. The figure show the lateral view of *Tg2(smyhc1:EGFP)* embryos at 3dpf. The arrow shows the expressed GFP in skeletal muscle fibre.

Reference

Elworthy S, Hargrave M, Knight R, Mebus K, Ingham PW. Expression of multiple slow myosin heavy chain genes reveals a diversity of zebrafish slow twitch muscle fibres with differing requirements for Hedgehog and Prdm1 activity. *Development*. 2008 Jun;135(12):2115-26.