

***Zdf8Tg*/+ (AB) (CZRC catalog ID: CZ71)**

Nature of the mutation

Zdf8Tg is generated by random integration of a GFP-containing construct, expresses GFP in T cell of thymus (Langenau, Traver et al. 2003).

Genotyping assay

1. Genotyping of the *zdf8Tg* allele is based on the fluorescent microscope. As identified by fluorescent microscope, the GFP fluorescence signal is detectable at 5 dpf.

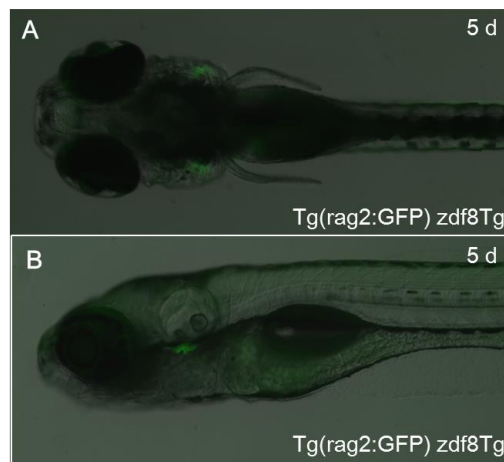


Figure. The *zdf8Tg* line expresses GFP in the thymus at 5 dpf. The figure shows the dorsal view (A) and lateral view (B) of *zdf8Tg* embryos at 5 dpf.

2. Genotyping of the *zdf8Tg* line can also be performed via allele-specific PCR using GFP-specific primers (Sense primer: TCATATGAAACGGCATGACT, antisense primer: TGGTCTGCTAGTTGAACGCT, the length of PCR fragment is 315 bp).

Reference

Langenau, D. M., D. Traver, et al. (2003). "Myc-induced T cell leukemia in transgenic zebrafish." *Science* **299**(5608): 887-890.