

## ***Mp711a* (AB) (CZRC catalog ID: CZ45)**

### **Nature of the mutation**

*Mp711a* is generated by random integration of a fusion GFP-containing construct. This line expresses GFP in developing heart.

### **Genotyping assay**

1. Genotyping of the *mp711a* allele is based on the fluorescent microscope. As identified by fluorescent microscope, the GFP fluorescence signal is detectable at 2 dpf.

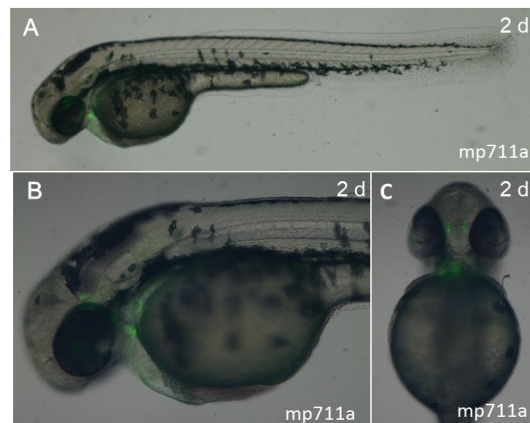


Figure. The *mp711a* line predominantly expresses GFP in the developing heart at 48 hpf.

The figure shows the lateral view (A and B) and ventral view (C) of *mp711a* embryos at 2 dpf.

2. Genotyping of the *mp711a* line can also be performed via allele-specific PCR using eGFP-specific primers (Sense primer: GTAAACGGCCACAAGTTCAG, antisense primer CTCGTTGGGGTCTTTGCT, the length of PCR fragment is 576 bp).

### **Reference**

n/a